

( ) ( )

**(Western Interior)**

( // : // : )

(Sisseton)

(Cepek & Hay, 1969b)

Bukry, 1973; Gartner, 1968)

(Stover, 1966; Rissati, 1973; Sissingh, 1977; Wind&Wise, 1983  
(Perch-Nielsen, 1985a)

Watkins,1989, 1992, 1996, Wise, 1988) :

(Burnett,1999

(  
(plate)

(

(SpB SpA)

...

.(Textler, 1967; Reeside, 1957)

(Pierre Shale)

(Gregory Member)

(Nibrara Formation)

(Chalks)

.(Johnson, 1959)

.(Sultz, 1980)

.(Hadavi, 2002)

( )  
( )



(Sisseton)  
Site 538  
(Hadavi, 2002)

(smear slide)

(ultrasonic Basin)

(smear slide)

.(Burnett, 1989)

...

BH2

( )

(Stage)

(Black, 1968)

Syracasphaeracea

Zygosphaeracea

Incertae sedis

(Yaung, 1992)

( )

(Roth, 1975)

(Thierstin, 1981)

(*Cribrosphaerella ehrenbergii*) (*Arkkhangelskiella specialata*)

(etching)

(Overgrowth)

(diversity)

(density)

*Cribrosphaerella*,

*Prediscosphaera* *Eiffellithus*, *Lucianorhabdus*

***Cribrosphaerella***

*Cribrosphaerella ehrenbergii*

( )

CAMPAHIAN pars.		STAGE
GREGORY MEMBER		LITHOSTRATIGRAPHY
No. 2	No. 1	DEPTH BELOW SURFACE (m)
CAMP		TAXA
00.01	00.02	<i>Acuturus scotus</i>
00.02	00.03	<i>Achnurella octradiata</i>
00.03	00.04	<i>Arhangelskiella specilata</i>
00.04	00.05	<i>Aspidolithus parvus constrictus</i>
00.05	00.06	<i>Aspidolithus parvus parvus</i>
00.06	00.07	<i>Biscutum notaculum</i>
00.07	00.08	<i>Biscutum sp.A</i>
00.08	00.09	<i>Biscutum sp.B</i>
00.09	00.10	<i>Biscutum sp.C</i>
00.10	00.11	<i>Biscutum zulkii</i>
00.11	00.12	<i>Braunosphæra bigelowii</i>
00.12	00.13	<i>Calcuttes obacurus</i>
00.13	00.14	<i>Calcuttes ovalis</i>
00.14	00.15	<i>Ceratolithoides aculeus</i>
00.15	00.16	<i>Ceratolithoides sesquipediatus</i>
00.16	00.17	<i>Carollithon exiguum</i>
00.17	00.18	<i>Carollithon signum</i>
00.18	00.19	<i>Creterhabdus conicus</i>
00.19	00.20	<i>Cyrtrosphaerella ehrenbergii</i>
00.20	00.21	<i>Cyrtrosphaerella sp.A</i>
00.21	00.22	<i>Cyrtrodretholites serratus</i>
00.22	00.23	<i>Effibellus eximus</i>
00.23	00.24	<i>Effibellus gorkei</i>
00.24	00.25	<i>Effibellus turzesseffii</i>
00.25	00.26	<i>Garineroa obliquum</i>
00.26	00.27	<i>Gorkeæ obliquiculus</i>
00.27	00.28	<i>Lithraphidites carniolensis</i>
00.28	00.29	<i>Lapidoecassis</i> sp.
00.29	00.30	<i>Loxolithus armita</i>
00.30	00.31	<i>Lucianorhabdus cayuxii</i>
00.31	00.32	<i>Microrhabdulus belgicus</i>
00.32	00.33	<i>Microrhabdulus decoratus</i>
00.33	00.34	<i>Microrhabdulus heicoloides</i>
00.34	00.35	<i>Micula concava</i>
00.35	00.36	<i>Micula decussata</i>
00.36	00.37	<i>Predicacosphaera arhangelskyi</i>
00.37	00.38	<i>Predicacosphaera cf. P. columnata</i>
00.38	00.39	<i>Predicacosphaera cf. P. grandis</i>
00.39	00.40	<i>Predicacosphaera cretacea</i>
00.40	00.41	<i>Predicacosphaera spinosa</i>
00.41	00.42	<i>Predicacosphaera stoveri</i>
00.42	00.43	<i>Quadrum avabenickiae</i>
00.43	00.44	<i>Reishardtites anthophorus</i>
00.44	00.45	<i>Repagulum parvidentatum</i>
00.45	00.46	<i>Retecapsa crenulata</i>
00.46	00.47	<i>Retecapsa surirela</i>
00.47	00.48	<i>Rhagodiclus angustus</i>
00.48	00.49	<i>Tetrapodorbiculus decorus</i>
00.49	00.50	<i>Trocholithus orionetus</i>
00.50	00.51	<i>Uniplanarius gothicus</i>
00.51	00.52	<i>Uniplanarius sissinghii</i>
00.52	00.53	<i>Waetzneria barnesiae</i>
00.53	00.54	<i>Waetzneria biporata</i>
00.54	00.55	<i>Zeughabdulus bicrescens</i>
00.55	00.56	<i>Zeughabdulus diplogarretus</i>
00.56	00.57	<i>Zeughabdulus</i> spp.

(Hadavai, 2002)



(plate 3)

**:Eiffellithus**

E.gorkae  
(palet 2)  
)

**:Lucianorhabdus**  
(

Cayeuxi Lucianorhabdus

**:Prediscosphaera**

(x +)

P.spinosa

P.cretacea



...

P.cretacea  
(plate 4)

Biscutum (palet 3)

Certaolithoides (plate 5)

( )

:

(Cepek&Hay, 1969)

**:Ceatolithoides aculeus (cc20)**

Uniplanarius

Ceatolithoides aculeus

sissingh

Uniplanarius sissingh

**:Uniplanarius sissingh (cc20)**

Uniplanarius sissingh

Sissingh, 1977

trifidum Uniplanarius

:

(David Watkinz)

## References

- Bukry, D., (1973) *Coccolith stratigraphy*. Eastern Equatorial Pacific, Leg 16, DSDP; Init. Rep. DSDP, **16**, 653-611
- Burnett, J.A., (1998) *Upper Cretaceous Calcareous Nannofossil Biostratigraphy* In: P.R.Bown(Ed.) Chapman & Hall/Kluwer Academic, London:132-199.
- Cepek, P., and Hay, W.W., (1969) *Zonation of the Upper Cretaceous using calcareous nannoplankton*, Paleobotanik, **3**, 333-341.
- Gartner, S., (1968) *Coccoliths and related calcareous nannofossils from Upper Cretaceous deposits of Texas and Arkansas*. The university of Kansas paleontological contributions. Article 48 (protista1) 1-56.
- Hadavi, F., (2002) *Biostratigraphy and Palaeogeography of the Gregory Member (Campanian) of the Western Interior Basin*. South Dakota. J.N.R. **24(1)**, 9-13.
- Johnson, C.L., (1959) *Microfossils of the Gregory Shale Member of the Pierre Shale Formation*, Proc. S. D. ACAD. xxxvIII.
- Perch-Nielsen, K., (1985) *Mesozoic calcareous nannofossil*, in plankton Stratigraphy (eds. H.M Bolli, J.B., Saunders and K., Perch-Nielsen), Cambridge University Press, pp.329-426.
- Reeside, J.B. Jr, (1957) *Paleoecology of the Cretaceous seas of the Western Interior of the United States*. Geologist, U.S. Geol. Survey, Memoir, **67**, 505-545.
- Risatti, J.B. (1973) *Nannoplankton biostratigraphy of the Upper Bluffport Marl-Lower Prairie Bluff Chalk interval (Upper Cretaceous), in Mississippi*. Proc. Symp. Calca. Nannofossils. Gulf Coast Sect. Soc. Econ. Paleontol. Mineral., pp.8-57.
- Roth, (1975) *Coccolith sedimentation by fecal pellets: laboratory experiments and field observations*. Geol. Sci. Am. Bull, b.**86**, 1079-1084.
- Schultz, L.G., Tourtelot, H.A., Gill, J.R., and Boemgen, J.G., (1980) *Composition and properties of the Pierre Shale and equivalent rocks, northern great plains Region*. U.S. Geological survey Professional Paper, **1064(B)**, B1-B84.
- Stover, L.E., (1966) *Cretaceous coccoliths and associated nannofossils from France and the Netherlands*. Micropaleontology, **12**, 133-167.

...

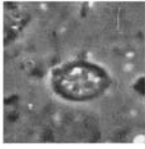
- Sissingh, W., (1977) *Biostratigraphy of Cretaceous calcareous nannoplankton*, Geologic Mijnbouw, **57**, 433-440.
- Texler, D.W., (1967) *Stratigraphic distribution of upper cretaceous nannoplankton (coccolith) in central and northern Colorado and the Black Hills region*: Journal of the Paleontology, **39**, 1355-1364.
- Thierstein, H.R., (1981) *Late Cretaceous nannoplankton and the change at the Cretaceous-Tertiary boundary*: SEPM Special Publication, **32**, 355-394.
- Watkins, D.K., (1986) *Calcareous nannofossil paleoceanography of the Cretaceous Greenhorn sea*: Geological Society of America, Bulletin, **97**, 1239-1249.
- Watkins, D.K., (1989) *Nannoplankton productivity fluctuations and rhythmically-bedded pelagic carbonates of Greenhorn Limestone (Upper Cretaceous)*: Paleogeography, Paleoclimatology, Paleoecology, **74**, 75-86.
- Watkins, D.K., (1992) *Upper cretaceous nannofossils from Leg 120, Kerguelen plateau, southern ocean*. Proc. Ocean. drilling program, scientific results, **120**,
- Watkins, D.K., (1996) *Upper Cretaceous calcareous nannofossil biostratigraphy and paleoecology of the Southern Ocean*. In Alicia Moguilevsky and Robin Whatley (Eds). Microfossils and Oceanic Environments. University of Wales Aberystwyth Press: 355-381.
- Wind, F.H., and Wise, S.W. (1983) *Corelation of Upper Campanian-Lower Maestrichtian calcareous nannofossil assemblages in drill and lower piston cores from the Falkland plateau, Southwest Atlantic ocean*. In Ludwig, W.J., Krashineninnikov, V.A. et al., init. Repts DSDP, 71: Washington (U.S.Govt. Printing Office), 551-563.
- Wise, S.W., Jr. (1988) *Mesozoic-Cenozoic history of calcareous nannofossil in the region of the southern ocean*. Palaeogeog. Palaeoclimatol., Palaeoecol., **67**, 157-179.
- Young, J.R., (1992) The description and analysis of coccolith structure, in Nannoplankton Reserch, Vol .1, (eds B.Hamrsmid and J.R.Young), Knihovnicka ZPZ, **14a(1)**, 35-71.

## PLATE 1

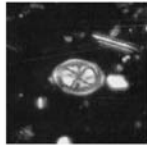
- Figs 1-2. *Ahmuerella octoradiata*
- Fig 3. *Ahmuerella regularis*
- Fig 4. *Heteromarginatus wallacei*
- Fig 5. *Pseudomarginatus* sp.A
- Fig 6. *Glaukolithus bicentricus*
- Fig 7. *Glaukolithus diplogramus*
- Figs 8. *Tranolithus minimus*
- Figs 9-10. *Tranolithus manifestus*
- Figs 11-12. *Tranolithus* sp.A
- Fig 13. *Gorkea obliquiclasus*
- Figs 14-15. *Zeugrhabdotus* cf *Z.erectus*
- Fig 16. *Zeugrhabdotus scotula*
- Fig 17. *Zeugrhabdotus* sp.A
- Figs 18-19. *Zeugrhabdotus* sp.B
- Fig 20. *Placozygus fibuliformis*
- Fig 21. *Placozygus* cf *P.sigmoïdes*
- Figs 22-23. *Chiastozygus propagulis*
- Fig 24. *Chiastozygus* sp.A
- Fig 25. *Chiastozygus* sp.B
- Fig 28-29. *Helicolithus* sp.A
- Fig 30. *Loxolithus armila*

...

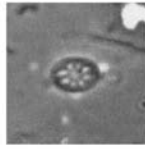
# PLATE 1



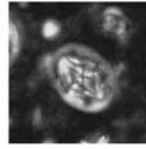
1



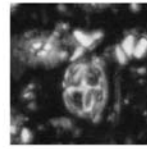
2



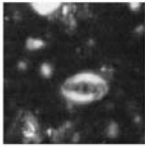
3



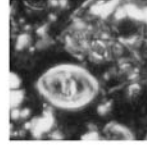
4



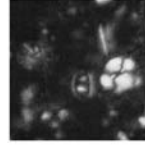
5



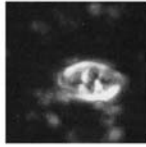
6



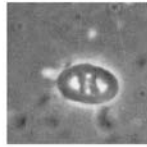
7



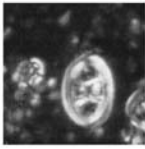
8



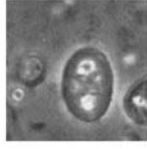
9



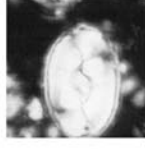
10



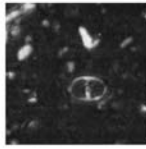
11



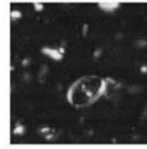
12



13



14



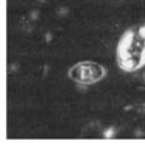
15



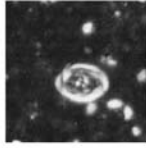
16



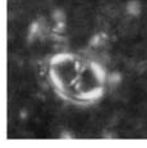
17



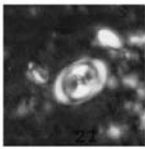
18



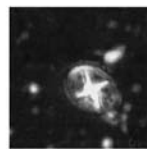
19



20



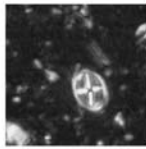
21



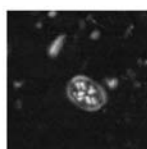
22



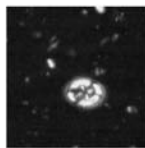
23



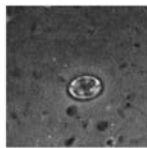
24



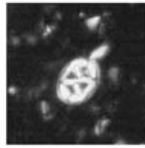
25



26



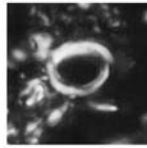
27



28



29



30

**PLATE 2**

Figs 1-5. *Eiffellithus eximius*

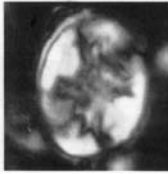
Figs 6-16. *Eiffellithus gorkae*

Figs 17-19. *Eiffellithus turriseiffelii*

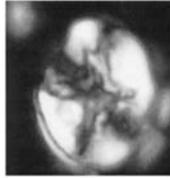
Fig 20. *Eiffellithus* sp.A

...

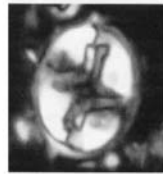
PLATE 2



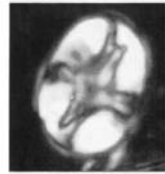
1



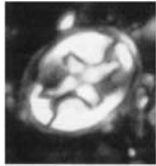
2



3



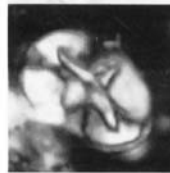
4



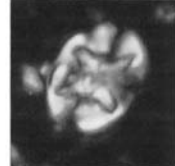
5



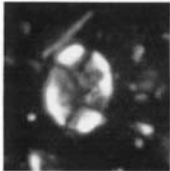
6



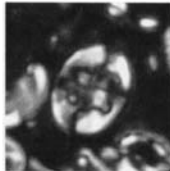
7



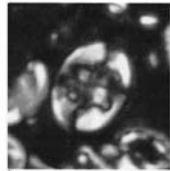
8



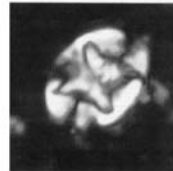
9



10



11



12



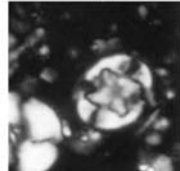
13



14



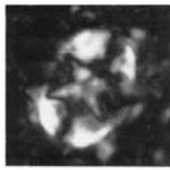
15



16



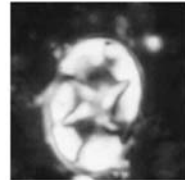
17



18



19



20

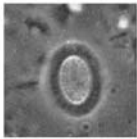
### PLATE 3

- Figs 1-2. *Cribrosphaerella* sp.A  
Figs 3-4. *Cribrosphaerella* sp.B  
Fig 5. *Cribrosphaerella* sp.C  
Fig 6. *Cretarhabdus conicus*  
Fig 7. *Cretarhabdus* sp.A  
Figs 8-9. *Cretarhabdus* sp.B  
Fig 10. *Cribrosphaerella ehrenbergii*  
Fig 11. *Flabellites oblongus*  
Fig 12. *Retacapsa* sp.A  
Fig 13. *Retacapsa crenulata*  
Fig 14. *Retacapsa* sp.B  
Fig 15. *Biscutum* sp.B  
Fig 16. *Biscutum magnum*  
Fig 17. *Biscutum* sp.A  
Fig 18. *Biscutum zolloi*  
Figs 19-20. *Biscutum* sp.B  
Figs 21-22. *Biscutum notaculum*  
Figs 23-24. *Markalius* sp.A  
Fig. 25. *Rotelapillus crenulatus*  
Fig 26. *Tetrapodorhabdus decorus*  
Fig 27. *Rhugodiscus angustus*  
Fig 28. *Corrollithion exiguum*  
Fig 29-30. *Cycloglasphaera* sp.A

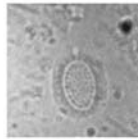


...

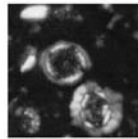
## PLATE 3



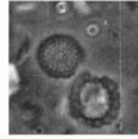
1



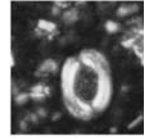
2



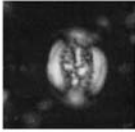
3



4



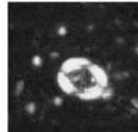
5



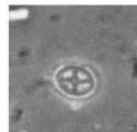
6



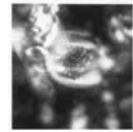
7



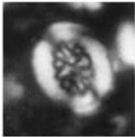
8



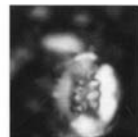
9



10



11



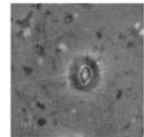
12



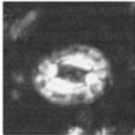
13



14



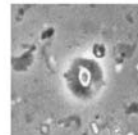
15



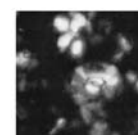
16



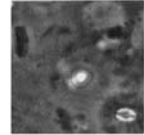
17



18



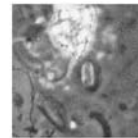
19



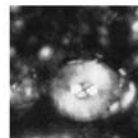
20



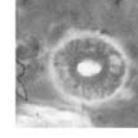
21



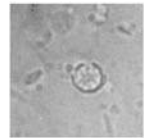
22



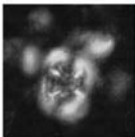
23



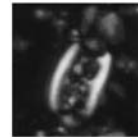
24



25



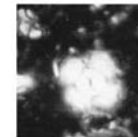
26



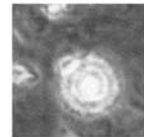
27



28



29



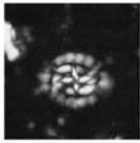
30

## PLATE 4

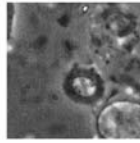
- Figs 1,6. *Prediscosphaera arkhangelskyi*  
Fig 2. *Prediscosphaera* cf. *P.intercisa*  
Figs 3-4. *Prediscosphaera* cf. *P. columnata*  
Fig 5. *Prediscosphaera* cf. *P.grandis*  
Fig 7. *Prediscosphaera* sp.A  
Fig 8. *Prediscosphaera* sp.B  
Fig 9. *Prediscosphaera spinosa*  
Fig 10. *Prediscosphaera columnata*  
Fig 11. *Prediscosphaera* sp.C  
Fig 12. *Prediscosphaera* sp.D  
Figs 13-15. *Prediscosphaera cretacea*  
Figs 16-17. *Broinsonia constrictus*  
Figs 18-19. *Broinsonia parvus*  
Figs 20-23. *Arkhangelskiella specialata*  
Figs 24-25. *Broinsonia furtiva*  
Figs 26-27. *Watznaueria barnesae*  
Fig 28. *Manvitella pemmatoidea*  
Fig 29. *Prediscosphaera* sp.E  
Fig 30. *Prediscosphaera* sp.F

...

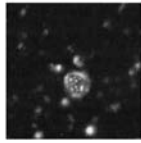
# PLATE 4



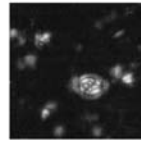
1



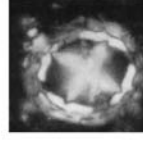
2



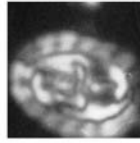
3



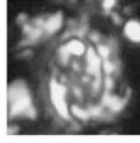
4



5



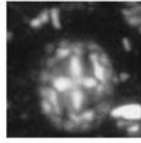
6



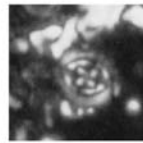
7



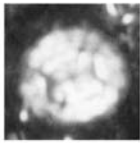
8



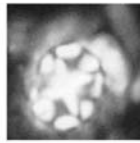
9



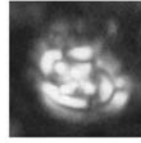
10



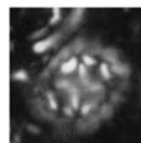
11



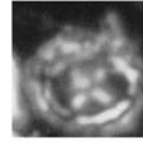
12



13



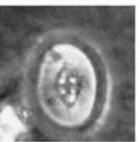
14



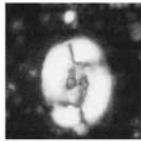
15



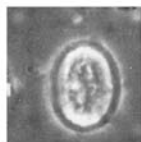
16



17



18



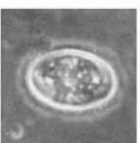
19



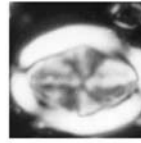
20



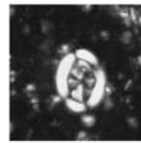
21



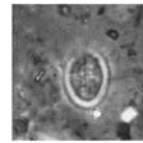
22



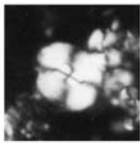
23



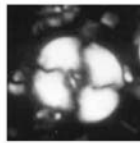
24



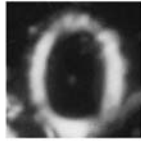
25



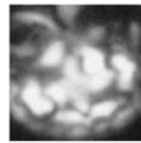
26



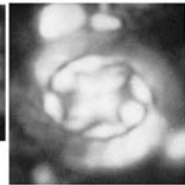
27



28



29



30

## PLATE 5

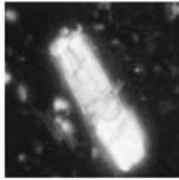
- Fig 1. *Lucianorhabdus* sp.A  
Fig 2. *Lucianorhabdus* sp.B  
Figs 3-5. *Lucianorhabdus cayeuxii*  
Fig 6. *Acuturris scotus*  
Fig 9. *Lucianorhabdus* sp.C  
Fig 10. *Microrhabdulus helicoides*  
Fig 11. *Microrhabdulus belgicus*  
Fig 12. *Microrhabdulus decoratus*  
Fig 13. *Lapideacassis* sp.A  
Fig 14. *Lapideacassis* sp.B  
Fig 15. *Uniplanarius sissinghii*  
Fig 16. *Quadrum* cf. *Q.svabenickae*  
Fig 17. *Micula concava*  
Fig 18. *Lucianorhabdus* ? spD  
Fig 19,23. *Ceratolithoides sesquipedalis*  
Figs 20,24. *Ceratolithoides* cf. *C.arcuatus*  
Fig 21. *Ceratolithoides aculeus*  
Fig 22. *Ceratolithoides* sp.A  
Fig 25. *Microrhabdulus belgicus*  
Fig 26. *Orastrum campanensis*  
Fig 27. *Calculites obscurus*  
Fig 28. *Calculites* sp.A  
Fig 29. *Pharus* sp.A

...

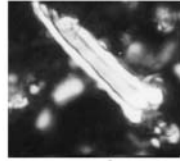
# PLATE 5



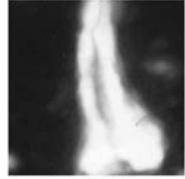
1



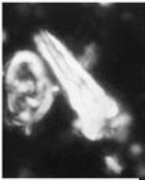
2



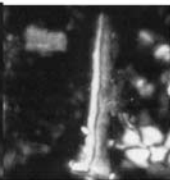
3



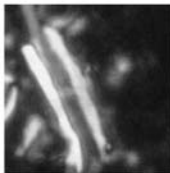
4



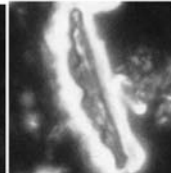
5



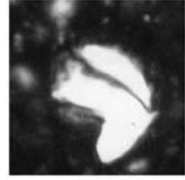
6



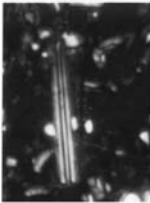
7



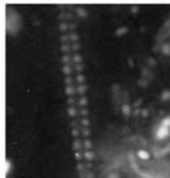
8



9



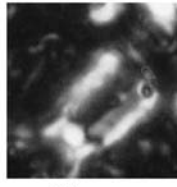
10



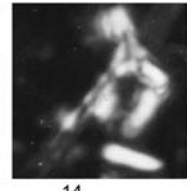
11



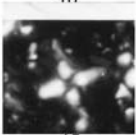
12



13



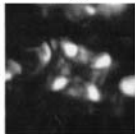
14



15



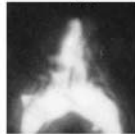
16



17



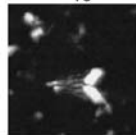
18



19



20



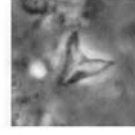
21



22



23



24



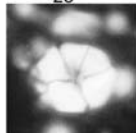
25



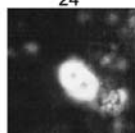
26



27



28



29